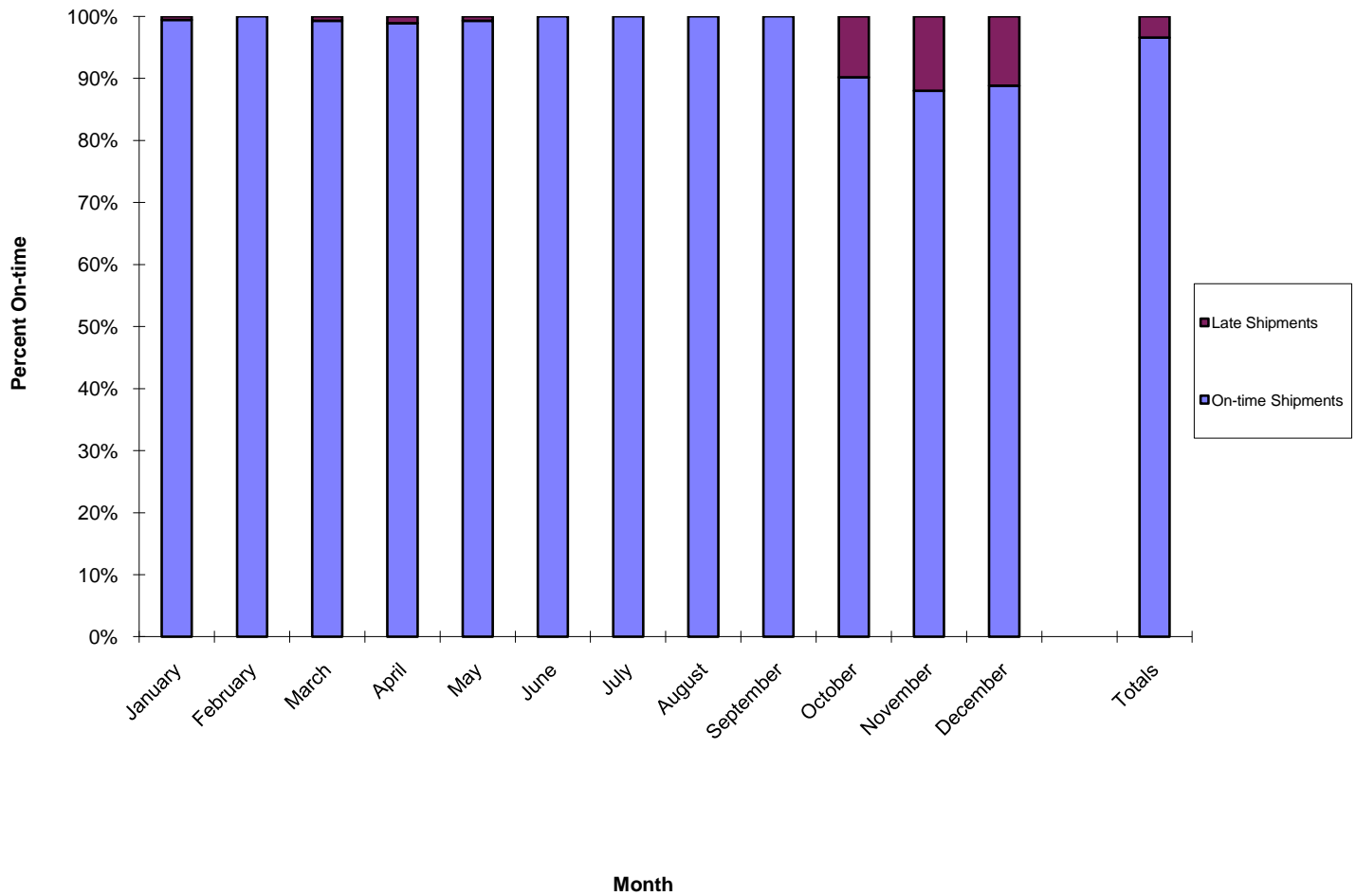


**ICTC USA - On-time Delivery Performance
Shipments Scheduled v Shipments Missed
2010**

Customer	On-time Shipments	Late Shipments	Percent Late Shipments Against On-time Shipments	Total Shipments	Comments	Percent On-time
January	345	2	0.576%	347		99.424%
February	300	0	0.000%	300		100.000%
March	405	3	0.735%	408		99.265%
April	356	4	1.111%	360		98.889%
May	270	2	0.735%	272		99.265%
June	263	0	0.000%	263		100.000%
July	259	0	0.000%	259		100.000%
August	409	0	0.000%	409		100.000%
September	307	0	0.000%	307		100.000%
October	340	37	9.814%	377		90.186%
November	359	49	12.010%	408		87.990%
December	358	45	11.166%	403		88.834%
Totals	3,971	142	3.452%	4,113	Total % On-time	96.548%

Delivery Performance Data - 2010



Quality Objective = 100% On-time Delivery